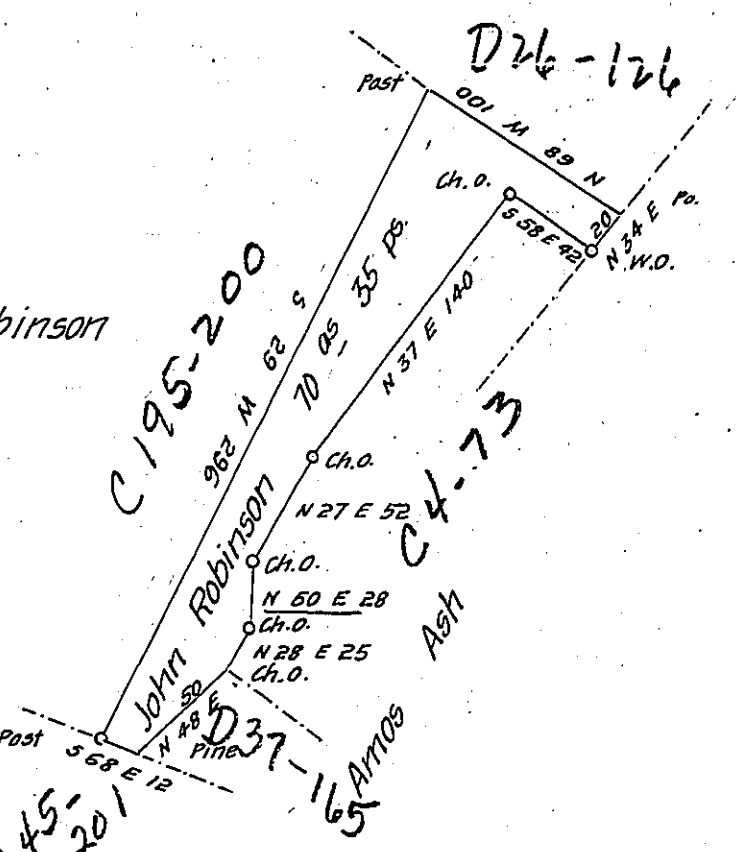


Patrick Donahoe  
In Right of  
Henry Tubman

John Robinson

David C. Rice  
in Right of  
Jonathan Dye.



Situate on Martins Mountain in Southampton Township  
 Bedford County Containing 70 acres 35 perches and the usual allowance  
 of Six per Cent for Roads &c. Surveyed the 18<sup>th</sup> day of November A.D.  
 1865 In pursuance—a Warrant granted to John Robinson dated the 15<sup>th</sup>  
 day of November A.D. 1865

Sam<sup>l</sup> Ketterman C.S.

To James P. Barr Esq<sup>r</sup>

S.G.

IN TESTIMONY that the above is a copy of the original remaining on file in  
 the Department of Internal Affairs of Pennsylvania, made  
 conformably to an Act of Assembly approved the 16th day of  
 February, 1833, I have hereunto set my Hand and caused  
 the Seal of said Department to be affixed at Harrisburg,  
 this second day of November 1906

*Leaac R Brown*  
 Secretary of Internal Affairs.